



# Gatwick Airport Northern Runway Project

Environmental Statement

Appendix 8.10.1: Tree Survey Report and Arboricultural Impact Assessment – Part 2 – Clean Version

**Book 5**

VERSION: 4.0

DATE: AUGUST 2024

Application Document Ref: 5.3

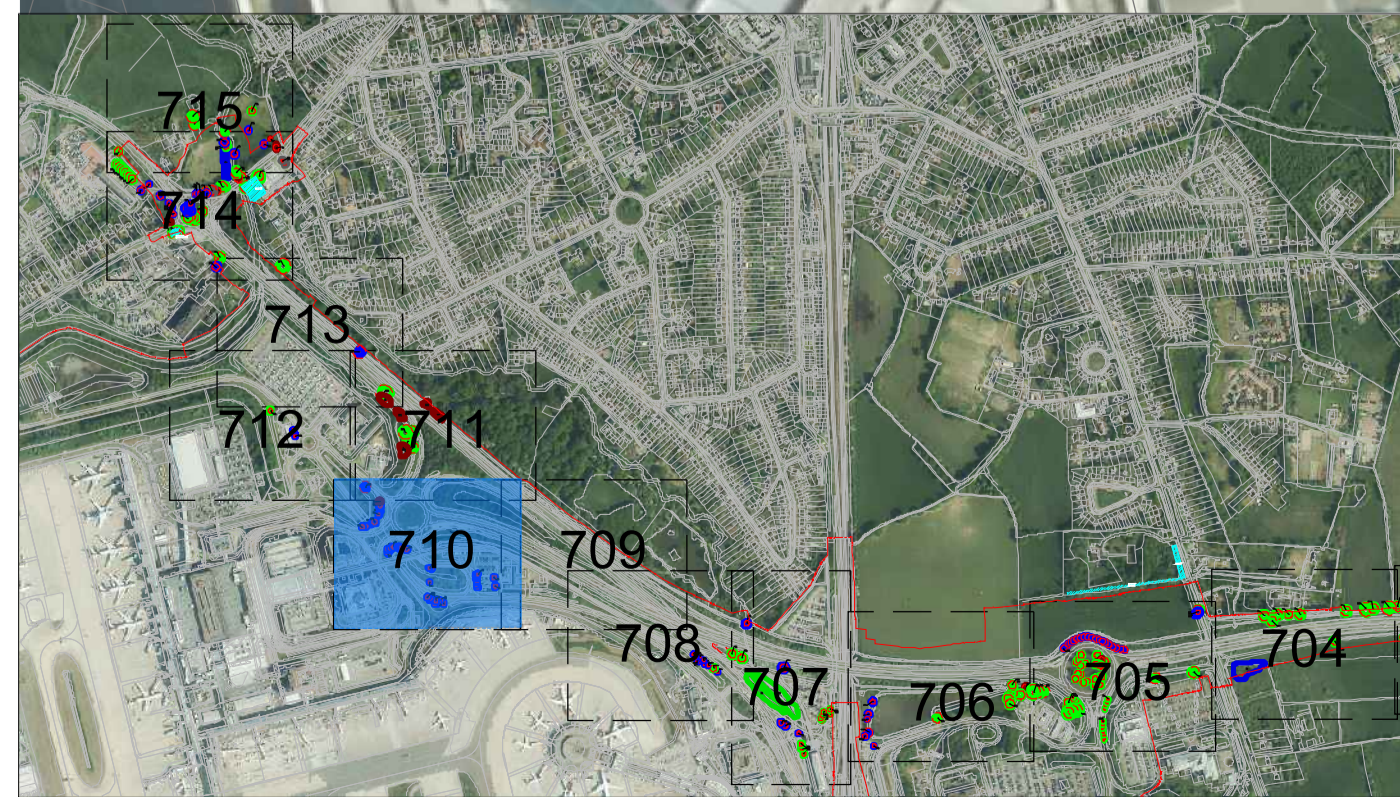
PINS Reference Number: TR020005



### Key

- Site boundary.
  - Survey Boundary / Boundary of M23/A23 construction activity
  - Tree with numbered reference. Canopy spread and BS5837:2012 tree quality category as shown below.
  - Tree (location estimated) with numbered reference. Canopy spread and BS5837:2012 tree quality category.
  - Tree off-site with numbered reference. Canopy spread and BS5837:2012 tree quality category.
  - Vegetation group with numbered reference. Canopy extents and BS5837:2012 tree quality category as shown below.
  - Hedge with numbered reference. Width and BS5837:2012 tree quality category as shown below.
- BS 5837:2012 Tree Quality Categories - Table 1
- Category A - High quality
  - Category B - Moderate quality
  - Category C - Low quality
  - Category U - Unsuitable for retention
- Root protection area (RPA) Calculated in accordance with Section 4.6 - BS5837:2012
  - Tree protected by Tree Preservation Order. Bracketed number relates to the TPO reference.

- NOTES:
- Refer to ES Appendix 8.10.1: Tree Survey Report and Arboricultural Impact Assessment for further details.
  - Survey based on a visual inspection from the ground and is not intended as a full arboricultural inspection.
  - Plan produced in accordance with recommendations set out in BS 5837:2012 - 'Trees in Relation to design, demolition and construction'.

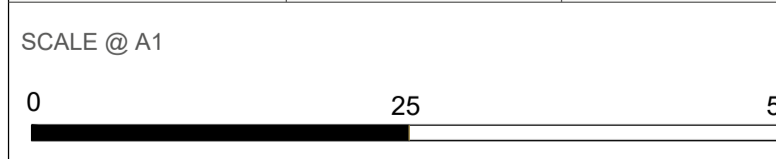


DOCUMENT  
**Environmental Statement**

DRAWING TITLE  
**M23 & A23 Tree Survey Plans**  
Appendix 8.10.1  
Sheet 10 of 15

DATE  
**August 2024**

ORIENTATION 	DRAWING NO. <b>710</b>	REVISION <b>For ES Issue</b>
	DRAWN BY <b>SH</b>	PM / CHECKED BY <b>PE</b>



Reproduced from Ordnance Survey map with the permission of Ordnance Survey on behalf of the controller of Her Majesty's Stationery Office © Crown Copyright (2023). License number 0100031673, 10001998, 100048492.  
© Copyright 2023 Gatwick Airport Limited. No part of this drawing is to be reproduced without prior permission of Gatwick Airport Limited.

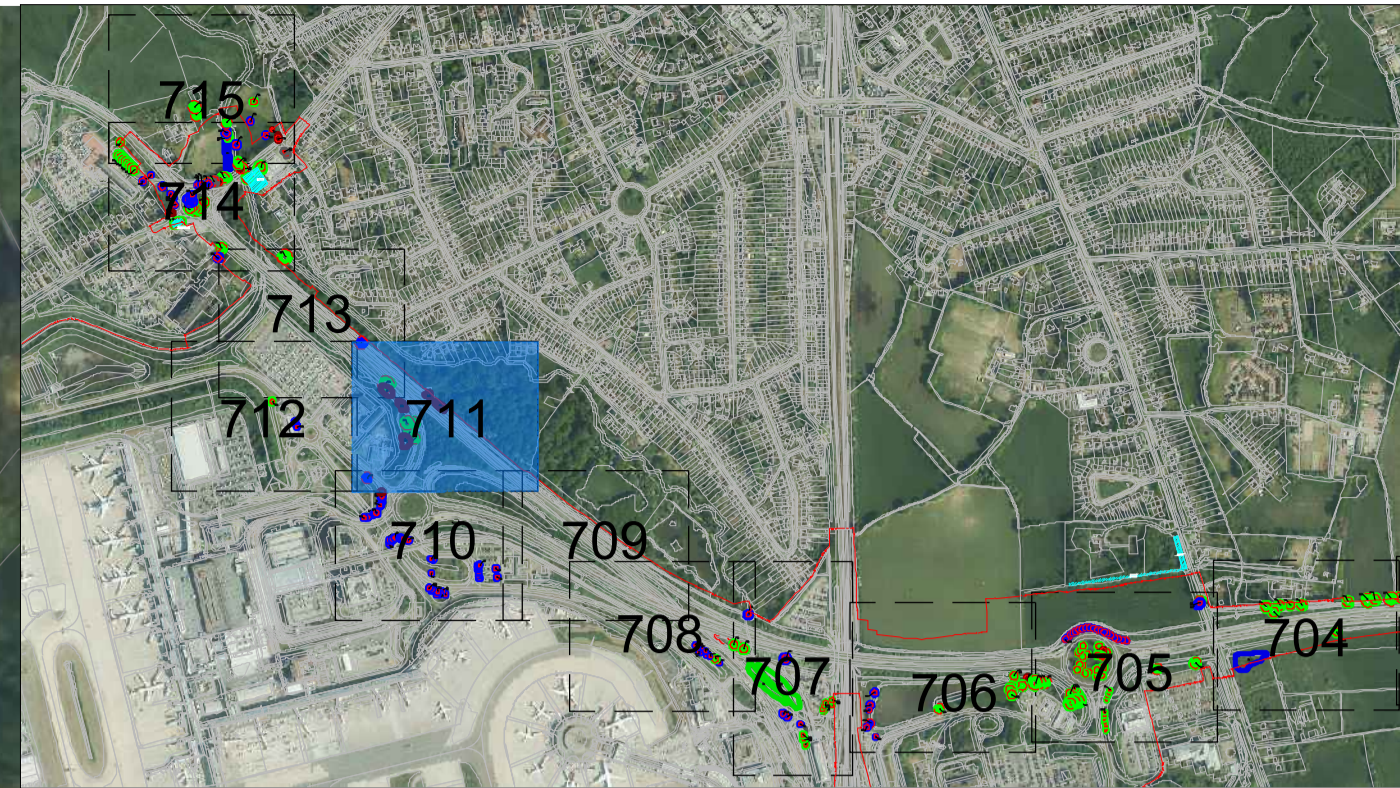


**Key**

- Site boundary.
  - Survey Boundary / Boundary of M23/A23 construction activity
  - Tree with numbered reference. Canopy spread and BS5837:2012 tree quality category as shown below.
  - Tree (location estimated) with numbered reference. Canopy spread and BS5837:2012 tree quality category.
  - Tree off-site with numbered reference. Canopy spread and BS5837:2012 tree quality category.
  - Vegetation group with numbered reference. Canopy extents and BS5837:2012 tree quality category as shown below.
  - Hedge with numbered reference. Width and BS5837:2012 tree quality category as shown below.
- BS 5837:2012 Tree Quality Categories - Table 1
- Category A - High quality
  - Category B - Moderate quality
  - Category C - Low quality
  - Category U - Unsuitable for retention
- Root protection area (RPA) Calculated in accordance with Section 4.6 - BS5837:2012
  - Tree protected by Tree Preservation Order. Bracketted number relates to the TPO reference.

**NOTES:**

- Refer to ES Appendix 8.10.1: Tree Survey Report and Arboricultural Impact Assessment for further details.
- Survey based on a visual inspection from the ground and is not intended as a full arboricultural inspection.
- Plan produced in accordance with recommendations set out in BS 5837:2012 - 'Trees in Relation to design, demolition and construction'.

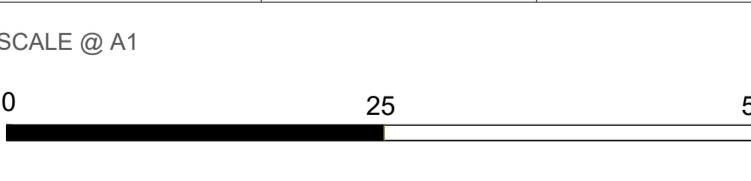


DOCUMENT  
**Environmental Statement**

DRAWING TITLE  
**M23 & A23 Tree Survey Plans  
Appendix 8.10.1  
Sheet 11 of 15**

DATE  
**August 2024**

ORIENTATION 	DRAWING NO. <b>711</b>	REVISION <b>For ES Issue</b>
	DRAWN BY <b>SH</b>	PM / CHECKED BY <b>PE</b>



Reproduced from Ordnance Survey map with the permission of Ordnance Survey on behalf of the controller of Her Majesty's Stationery Office © Crown Copyright (2023). License number 0100031673, 10001998, 100048492.  
© Copyright 2023 Gatwick Airport Limited. No part of this drawing is to be reproduced without prior permission of Gatwick Airport Limited.





**Key**

- Site boundary.
  - Survey Boundary / Boundary of M23/A23 construction activity
  - Tree with numbered reference. Canopy spread and BS5837:2012 tree quality category as shown below.
  - Tree (location estimated) with numbered reference. Canopy spread and BS5837:2012 tree quality category.
  - Tree off-site with numbered reference. Canopy spread and BS5837:2012 tree quality category.
  - Vegetation group with numbered reference. Canopy extents and BS5837:2012 tree quality category as shown below.
  - Hedge with numbered reference. Width and BS5837:2012 tree quality category as shown below.
- BS 5837:2012 Tree Quality Categories - Table 1
- Category A - High quality
  - Category B - Moderate quality
  - Category C - Low quality
  - Category U - Unsuitable for retention
- Root protection area (RPA) Calculated in accordance with Section 4.6 - BS5837:2012
  - Tree protected by Tree Preservation Order. Bracketted number relates to the TPO reference.

**NOTES:**

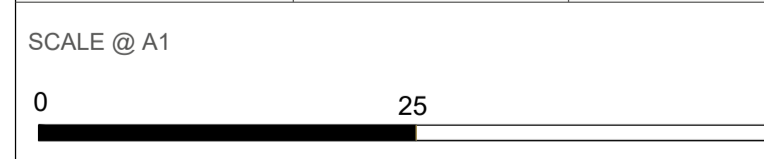
- Refer to ES Appendix 8.10.1: Tree Survey Report and Arboricultural Impact Assessment for further details.
- Survey based on a visual inspection from the ground and is not intended as a full arboricultural inspection.
- Plan produced in accordance with recommendations set out in BS 5837:2012 - 'Trees in Relation to design, demolition and construction'.

DOCUMENT  
**Environmental Statement**

DRAWING TITLE  
**M23 & A23 Tree Survey Plans**  
Appendix 8.10.1  
Sheet 12 of 15

DATE  
**August 2024**

ORIENTATION 	DRAWING NO. <b>712</b>	REVISION <b>For ES Issue</b>
	DRAWN BY <b>SH</b>	PM / CHECKED BY <b>PE</b>



Reproduced from Ordnance Survey map with the permission of Ordnance Survey on behalf of the controller of Her Majesty's Stationery Office © Crown Copyright (2023). License number 0100031673, 10001998, 100048492.  
© Copyright 2023 Gatwick Airport Limited. No part of this drawing is to be reproduced without prior permission of Gatwick Airport Limited.

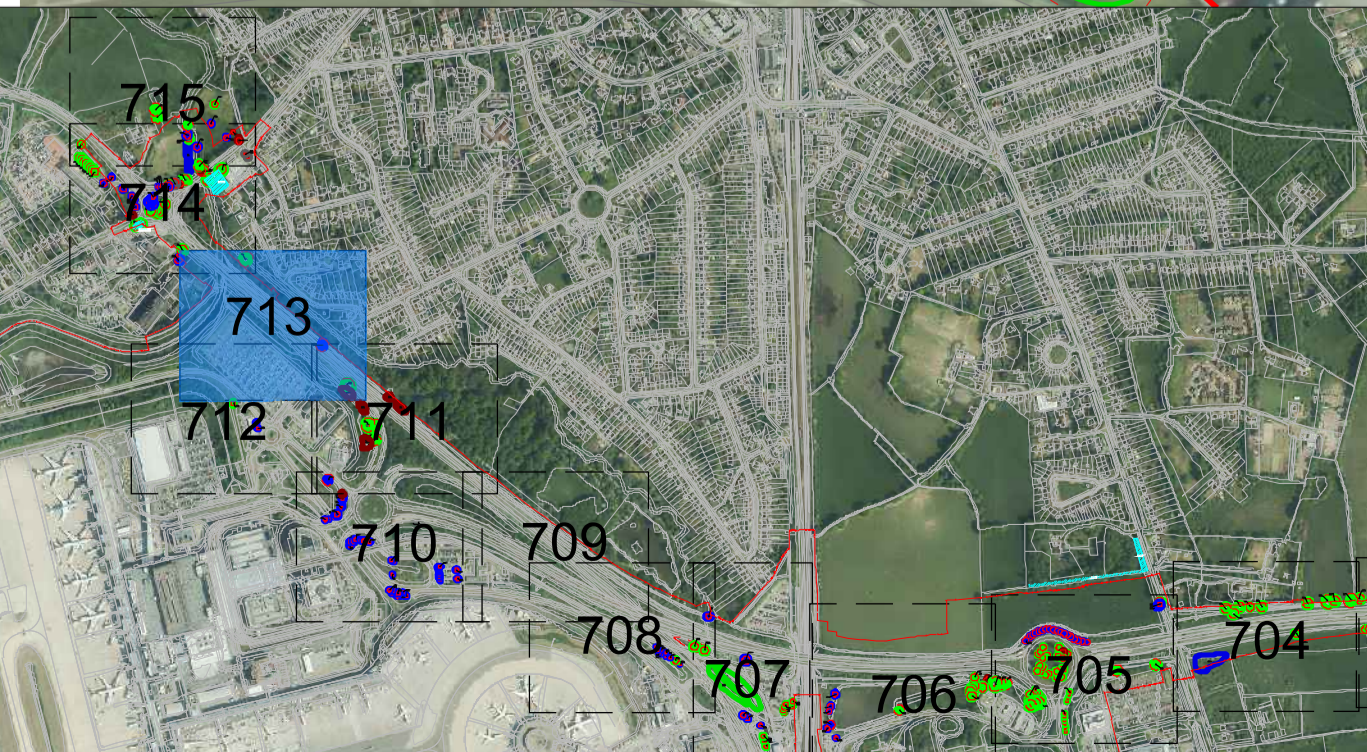


### Key

- Site boundary.
  - Survey Boundary / Boundary of M23/A23 construction activity
  - Tree with numbered reference. Canopy spread and BS5837:2012 tree quality category as shown below.
  - Tree (location estimated) with numbered reference. Canopy spread and BS5837:2012 tree quality category.
  - Tree off-site with numbered reference. Canopy spread and BS5837:2012 tree quality category.
  - Vegetation group with numbered reference. Canopy extents and BS5837:2012 tree quality category as shown below.
  - Hedge with numbered reference. Width and BS5837:2012 tree quality category as shown below.
- BS 5837:2012 Tree Quality Categories - Table 1
- Category A - High quality
  - Category B - Moderate quality
  - Category C - Low quality
  - Category U - Unsuitable for retention
- Root protection area (RPA) Calculated in accordance with Section 4.6 - BS5837:2012
  - Tree protected by Tree Preservation Order. Bracketted number relates to the TPO reference.

NOTES:

- Refer to ES Appendix 8.10.1: Tree Survey Report and Arboricultural Impact Assessment for further details.
- Survey based on a visual inspection from the ground and is not intended as a full arboricultural inspection.
- Plan produced in accordance with recommendations set out in BS 5837:2012 - 'Trees in Relation to design, demolition and construction'.

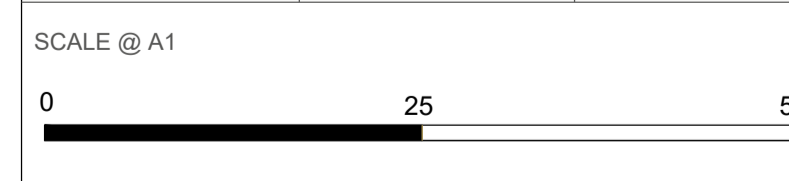


DOCUMENT  
Environmental Statement

DRAWING TITLE  
M23 & A23 Tree Survey Plans  
Appendix 8.10.1  
Sheet 13 of 15

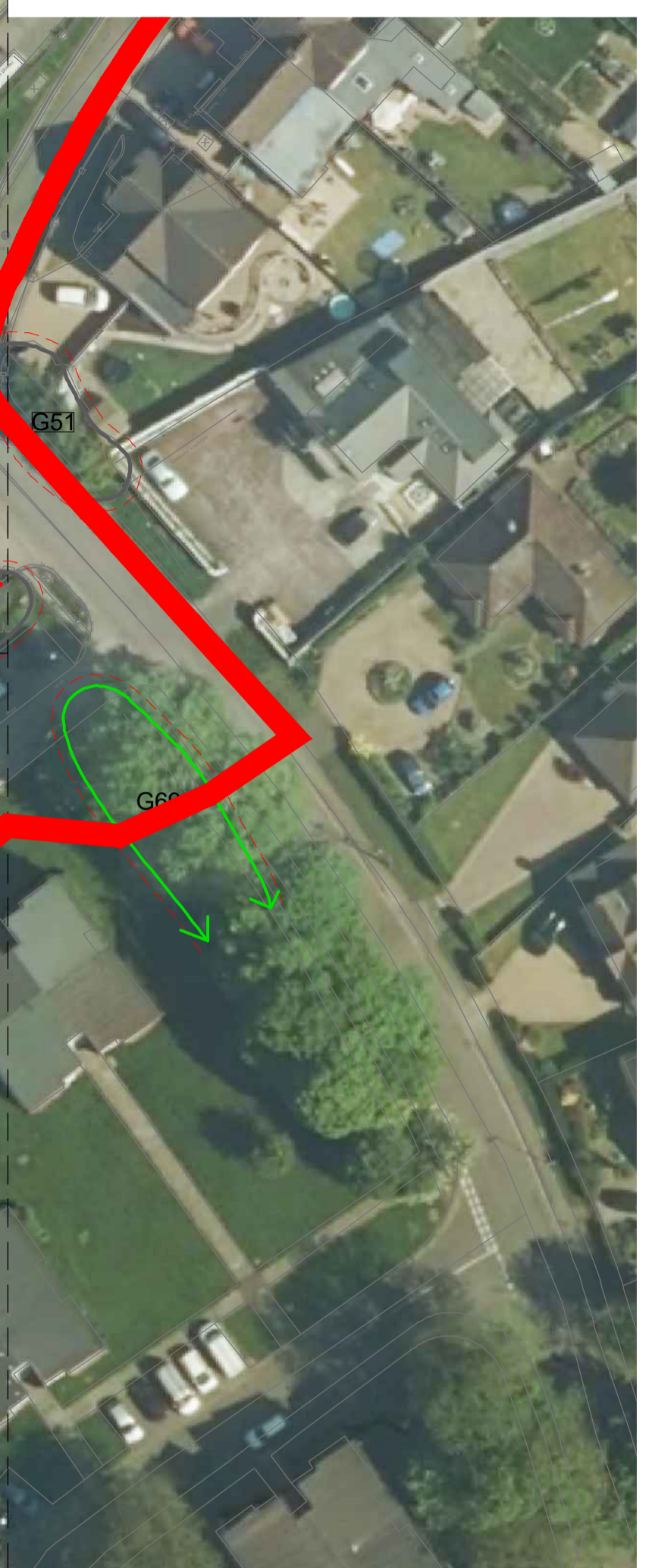
DATE  
August 2024

ORIENTATION 	DRAWING NO. 713	REVISION For ES Issue
	DRAWN BY SH	PM / CHECKED BY PE



Reproduced from Ordnance Survey map with the permission of Ordnance Survey on behalf of the controller of Her Majesty's Stationery Office © Crown Copyright (2023). License number 0100031673, 10001998, 100048492.  
© Copyright 2023 Gatwick Airport Limited. No part of this drawing is to be reproduced without prior permission of Gatwick Airport Limited.





**Key**

- Site boundary.
- Survey Boundary / Boundary of M23/A23 construction activity
- Tree with numbered reference. Canopy spread and BS5837:2012 tree quality category as shown below.
- Tree (location estimated) with numbered reference. Canopy spread and BS5837:2012 tree quality category.
- Tree off-site with numbered reference. Canopy spread and BS5837:2012 tree quality category.
- Vegetation group with numbered reference. Canopy extents and BS5837:2012 tree quality category as shown below.
- Hedge with numbered reference. Width and BS5837:2012 tree quality category as shown below.

BS 5837:2012 Tree Quality Categories - Table 1

- Category A - High quality
- Category B - Moderate quality
- Category C - Low quality
- Category U - Unsuitable for retention

- Root protection area (RPA) Calculated in accordance with Section 4.6 - BS5837:2012
- Tree protected by Tree Preservation Order. Bracketed number relates to the TPO reference.

**NOTES:**

- Refer to ES Appendix 8.10.1: Tree Survey Report and Arboricultural Impact Assessment for further details.
- Survey based on a visual inspection from the ground and is not intended as a full arboricultural inspection.
- Plan produced in accordance with recommendations set out in BS 5837:2012 - 'Trees in Relation to design, demolition and construction'.



DOCUMENT

**Environmental Statement**

---

DRAWING TITLE  
**M23 & A23 Tree Survey Plans  
Appendix 8.10.1  
Sheet 14 of 15**

---

DATE  
**August 2024**

---

ORIENTATION 	DRAWING NO. <b>714</b>	REVISION <b>For ES Issue</b>
	DRAWN BY <b>SH</b>	PM / CHECKED BY <b>PE</b>

---

SCALE @ A1

---

Reproduced from Ordnance Survey map with the permission of Ordnance Survey on behalf of the controller of Her Majesty's Stationery Office © Crown Copyright (2023). License number 0100031673, 10001998, 100048492.  
© Copyright 2023 Gatwick Airport Limited. No part of this drawing is to be reproduced without prior permission of Gatwick Airport Limited.

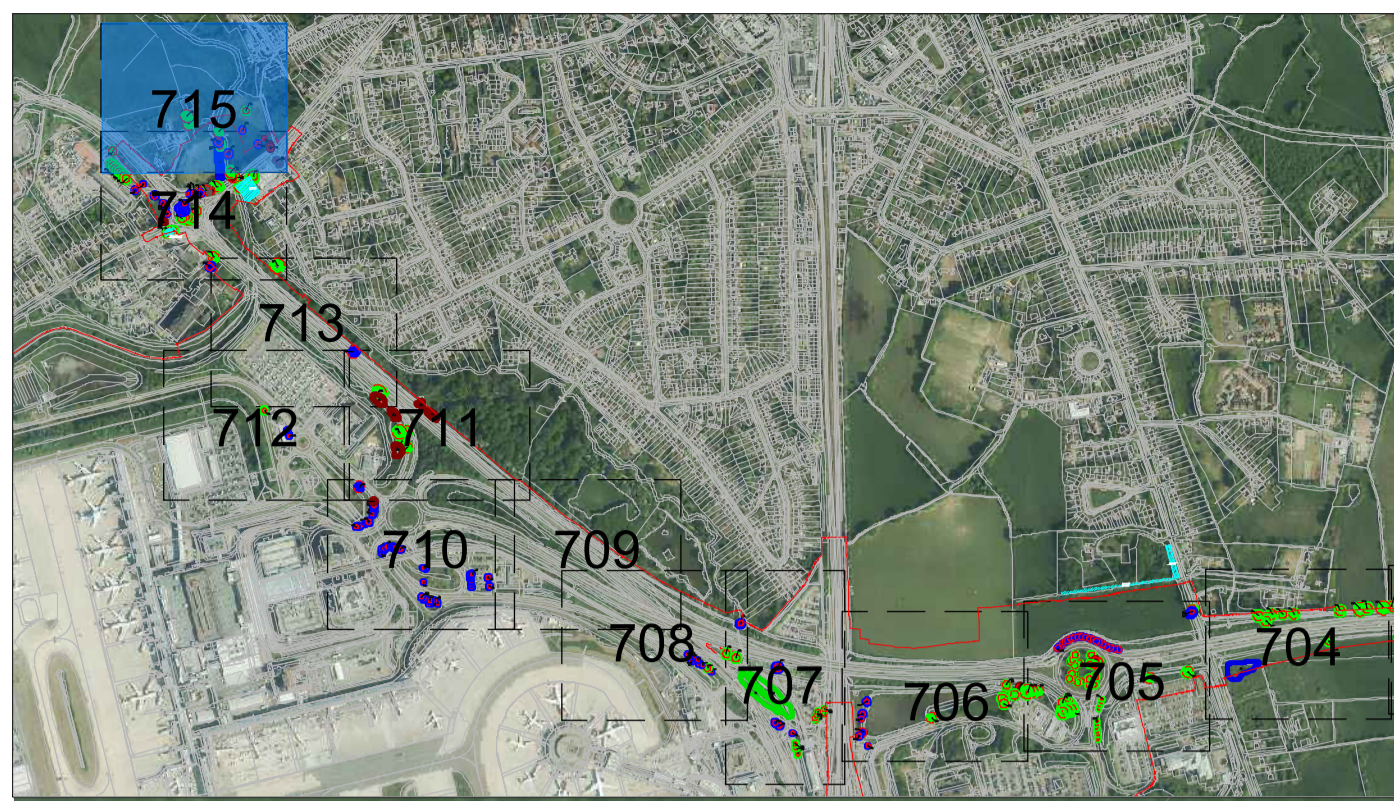


### Key

- Site boundary.
  - Survey Boundary / Boundary of M23/A23 construction activity
  - Tree with numbered reference. Canopy spread and BS5837:2012 tree quality category as shown below.
  - Tree (location estimated) with numbered reference. Canopy spread and BS5837:2012 tree quality category.
  - Tree off-site with numbered reference. Canopy spread and BS5837:2012 tree quality category.
  - Vegetation group with numbered reference. Canopy extents and BS5837:2012 tree quality category as shown below.
  - Hedge with numbered reference. Width and BS5837:2012 tree quality category as shown below.
- BS 5837:2012 Tree Quality Categories - Table 1
- Category A - High quality
  - Category B - Moderate quality
  - Category C - Low quality
  - Category U - Unsuitable for retention
- Root protection area (RPA) Calculated in accordance with Section 4.6 - BS5837:2012
  - Tree protected by Tree Preservation Order. Bracketed number relates to the TPO reference.

### NOTES:

- Refer to ES Appendix 8.10.1: Tree Survey Report and Arboricultural Impact Assessment for further details.
- Survey based on a visual inspection from the ground and is not intended as a full arboricultural inspection.
- Plan produced in accordance with recommendations set out in BS 5837:2012 - 'Trees in Relation to design, demolition and construction'.



### DOCUMENT

Environmental Statement

### DRAWING TITLE

M23 & A23 Tree Survey Plans  
Appendix 8.10.1  
Sheet 15 of 15

### DATE

August 2024

### ORIENTATION



### DRAWING NO.

715

### REVISION

For ES Issue

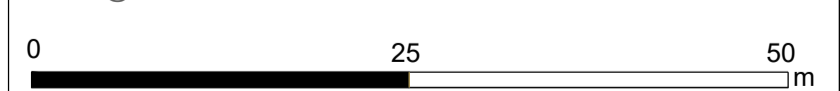
### DRAWN BY

SH

### PM / CHECKED BY

PE

### SCALE @ A1



Reproduced from Ordnance Survey map with the permission of Ordnance Survey on behalf of the controller of Her Majesty's Stationery Office © Crown Copyright (2023). License number 0100031673, 10001998, 100048492.

© Copyright 2023 Gatwick Airport Limited. No part of this drawing is to be reproduced without prior permission of Gatwick Airport Limited.



Appendix G  
Airport Tree Survey Plans





**Key**

- Site boundary.
- Survey boundary.
- Tree with numbered reference. Canopy spread and coloured BS5837:2012 tree quality category as shown below.
  - = Tree details estimate (inaccessible tree)
  - = Tree in off site location
- Tree group plotted with individual stem locations and numbered reference. Canopy extents coloured to match BS5837:2012 tree quality category as shown below.
- Tree or Vegetation group with numbered reference. Canopy extents coloured to match BS5837:2012 tree quality category as shown below and dashed line to show indicative stem line.
- Hedge with numbered reference. Canopy extents coloured to match BS5837:2012 tree quality category as shown below and dashed line to show hedge centerline.
- Woodland with numbered reference. Canopy extents coloured to match BS5837:2012 tree quality category as shown below and dashed line to show indicative tree line.

**BS 5837:2012 Tree Quality Categories - Table 1**

- Category A - High quality
- Category B - Moderate quality
- Category C - Low quality
- Category U - Unsuitable for retention

- Direction of first significant branch
- Root protection area (RPA). Calculated in accordance with Section 4.6 - BS5837:2012
- Veteran tree buffer (15 x stem Ø) (as per standing advice produced by Forestry England and Natural England)
- Tree protected by Tree Preservation Order. Bracketted number relates to the TPO reference.
- Designated Ancient Woodland (as per Natural England ancient woodland inventory, via open data publication)
- Ancient Woodland tree buffer (15m offset) (as per standing advice produced by Forestry England and Natural England)

**NOTES:**

- Refer to ES Appendix 8.10.1, Tree Survey Report and Arboricultural Impact Assessment for further details.
- Survey based on a visual inspection from the ground and is not intended as a full arboricultural inspection.
- Plan produced in accordance with recommendations set out in BS 5837:2012, "Trees in Relation to design, demolition and construction".
- Survey based upon Aerial Photography and trees located by eye.

DOCUMENT

**Environmental Statement**

---

DRAWING TITLE

**Airport Tree Survey Plans  
Appendix 8.10.1  
Overview**

DATE

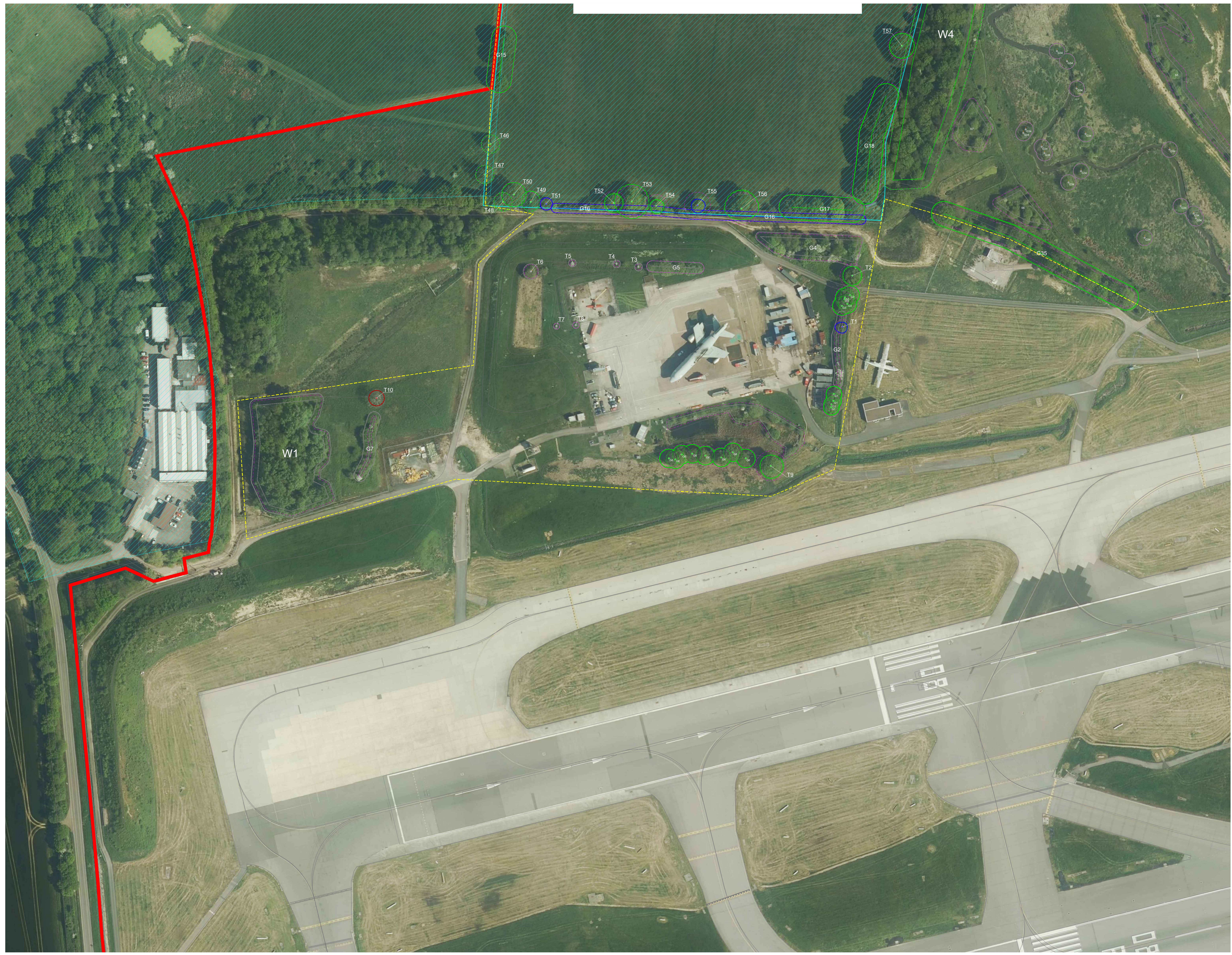
**August 2024**

ORIENTATION	DRAWING NO.	REVISION
N ▲	720	For ES Issue
	DRAWN BY RC	PM / CHECKED BY DC

SCALE @ A0

**Custom Scale**





### Key

- Site boundary.
- Survey boundary.
- Tree with numbered reference. Canopy spread and coloured BS5837:2012 tree quality category as shown below.
  - = Tree details estimate (accessible tree)
  - = Tree in off site location
- Tree group plotted with individual stem locations and numbered reference. Canopy extents coloured to match BS5837:2012 tree quality category as shown below.
- Tree or Vegetation group with numbered reference. Canopy extents coloured to match BS5837:2012 tree quality category as shown below and dashed line to show indicative stem line.
- Hedge with numbered reference. Canopy extents coloured to match BS5837:2012 tree quality category as shown below and dashed line to show hedge centerline.
- Woodland with numbered reference. Canopy extents coloured to match BS5837:2012 tree quality category as shown below and dashed line to show indicative tree line.

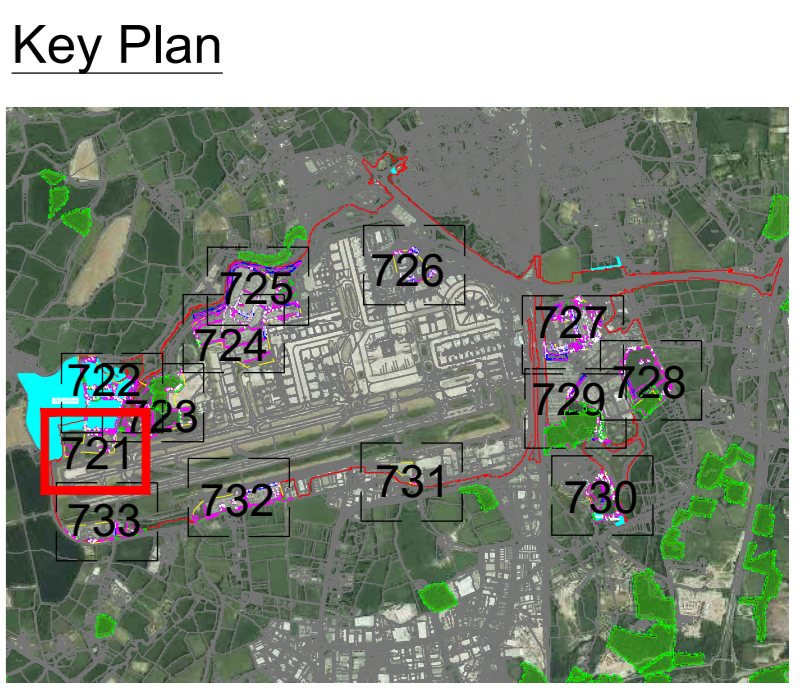
**BS 5837:2012 Tree Quality Categories - Table 1**

- Category A - High quality
- Category B - Moderate quality
- Category C - Low quality
- Category U - Unsuitable for retention

- Direction of first significant branch
- Root protection area (RPA) Calculated in accordance with Section 4.6 - BS5837:2012
- Veteran tree buffer (15 x stem Ø) (as per standing advice produced by Forestry England and Natural England)
- Tree protected by Tree Preservation Order. Bracketted number relates to the TPO reference.
- Designated Ancient Woodland (as per Natural England ancient woodland inventory, via open data publication)
- Ancient Woodland tree buffer (15m offset) (as per standing advice produced by Forestry England and Natural England)

**NOTES:**

- Refer to ES Appendix 8.10.1, Tree Survey Report and Arboricultural Impact Assessment for further details.
- Survey based on a visual inspection from the ground and is not intended as a full arboricultural inspection.
- Plan produced in accordance with recommendations set out in BS 5837:2012, 'Trees in Relation to design, demolition and construction'.
- Survey based upon Aerial Photography and trees located by eye.



DOCUMENT

**Environmental Statement**

---

DRAWING TITLE

**Airport Tree Survey Plans  
Appendix 8.10.1  
Sheet 1 of 13**

DATE **August 2024**

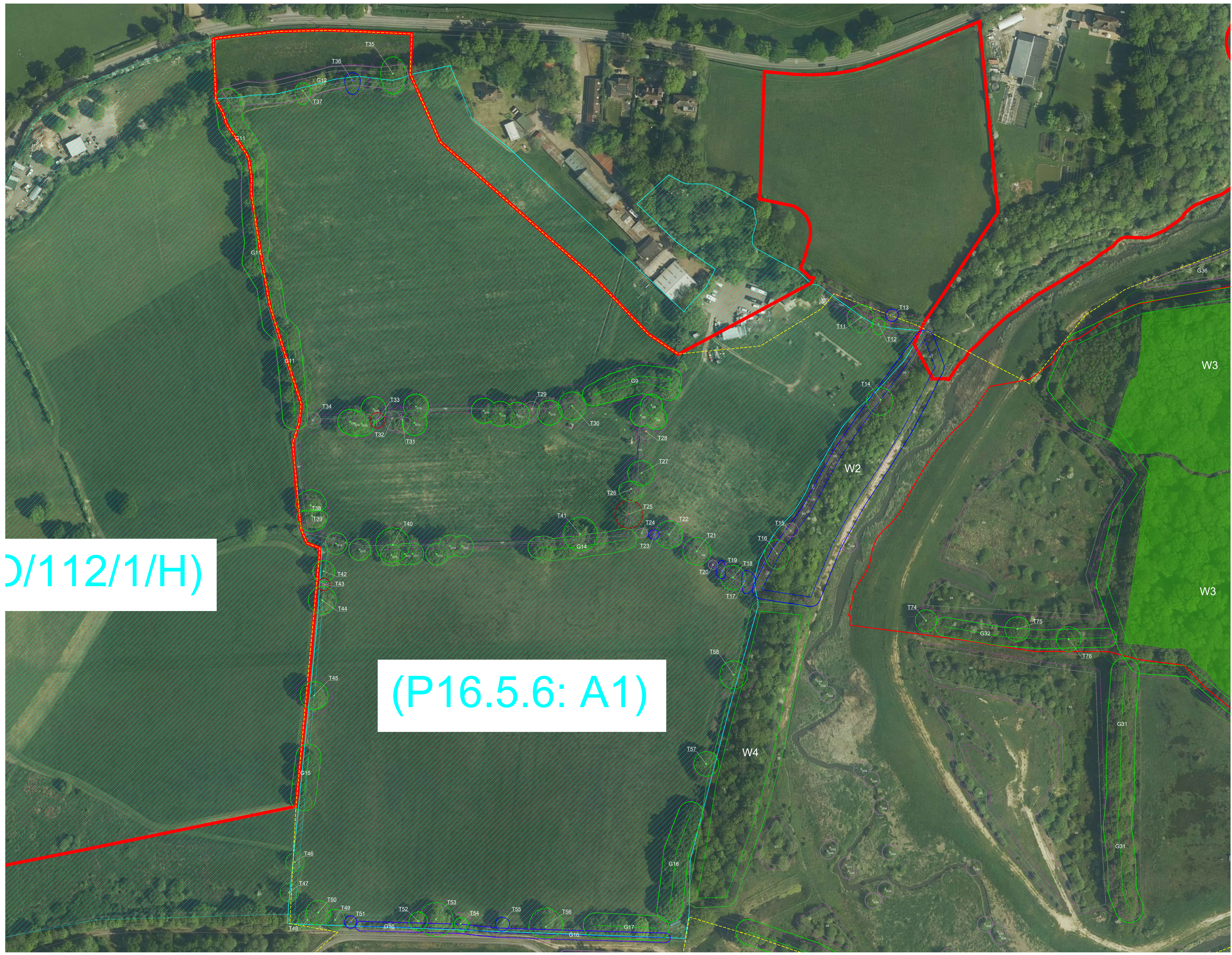
ORIENTATION	DRAWING NO.	REVISION
N ↑	721	For ES Issue
	DRAWN BY RC	PM / CHECKED BY DC

SCALE @ A0  
0m 25m 50m

Reproduced from Ordnance Survey map with the permission of Ordnance Survey on behalf of the controller of Her Majesty's Stationery Office © Crown Copyright (2023). License number 610031673, 10004962, 10004962.

© Copyright 2023 Gatwick Airport Limited. No part of this drawing is to be reproduced without prior permission of Gatwick Airport Limited.





**Key**

- Site boundary.
- Survey boundary.
- Tree with numbered reference. Canopy spread and coloured BS5837:2012 tree quality category as shown below.
  - Tree details estimate (inaccessible tree)
  - Tree in off site location
- G1 Tree group plotted with individual stem locations and numbered reference. Canopy extents coloured to match BS5837:2012 tree quality category as shown below.
- G1 Tree or Vegetation group with numbered reference. Canopy extents coloured to match BS5837:2012 tree quality category as shown below and dashed line to show indicative stem line.
- H1 Hedge with numbered reference. Canopy extents and coloured BS5837:2012 tree quality category as shown below and dashed line to show hedge centerline.
- W1 Woodland with numbered reference. Canopy extents coloured to match BS5837:2012 tree quality category as shown below and dashed line to show indicative tree line.

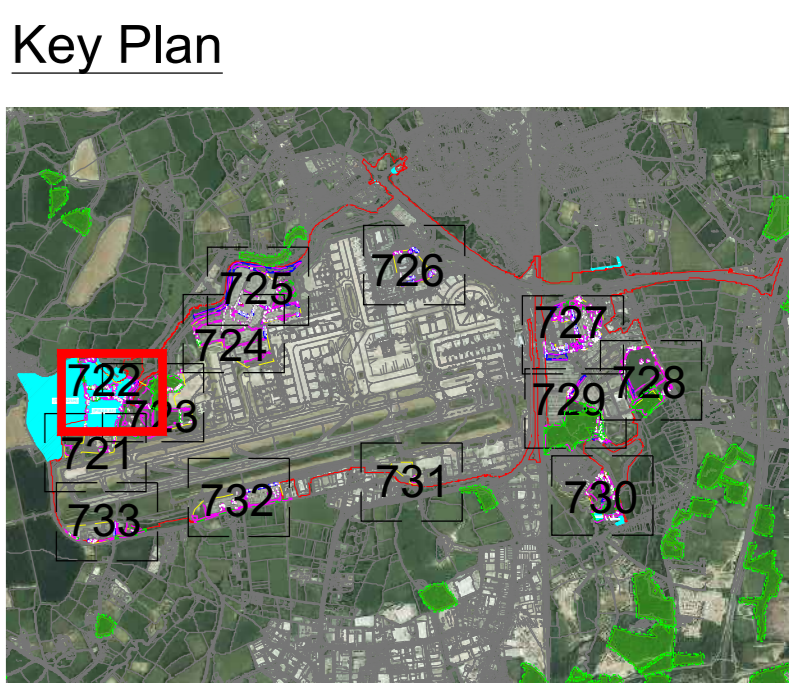
**BS 5837:2012 Tree Quality Categories - Table 1**

- Category A - High quality
- Category B - Moderate quality
- Category C - Low quality
- Category U - Unsuitable for retention

- Direction of first significant branch
- Root protection area (RPA) Calculated in accordance with Section 4.6 - BS5837:2012
- Veteran tree buffer (15 x stem Ø) (as per standing advice produced by Forestry England and Natural England)
- Tree protected by Tree Preservation Order. Bracketted number relates to the TPO reference.
- Designated Ancient Woodland (as per Natural England ancient woodland inventory, via open data publication)
- Ancient Woodland tree buffer (15m offset) (as per standing advice produced by Forestry England and Natural England)

**NOTES:**

- Refer to ES Appendix 8.10.1, Tree Survey Report and Arboricultural Impact Assessment for further details.
- Survey based on a visual inspection from the ground and is not intended as a full arboricultural inspection.
- Plan produced in accordance with recommendations set out in BS 5837:2012, 'Trees in Relation to design, demolition and construction'.
- Survey based upon Aerial Photography and trees located by eye.



D/112/1/H)

(P16.5.6: A1)

DOCUMENT

**Environmental Statement**

DRAWING TITLE

**Airport Tree Survey Plans Appendix 8.10.1 Sheet 2 of 13**

DATE

**August 2024**

ORIENTATION	DRAWING NO.	REVISION
	722	For ES Issue
	DRAWN BY	PM / CHECKED BY
	RC	DC

SCALE @ A0

0m 25m 50m

Reproduced from Ordnance Survey map with the permission of Ordnance Survey on behalf of the controller of Her Majesty's Stationery Office © Crown Copyright (2023). License number 010031073, 10001998, 100048492.

© Copyright 2023 Gatwick Airport Limited. No part of this drawing is to be reproduced without prior permission of Gatwick Airport Limited.





5.6: A1)

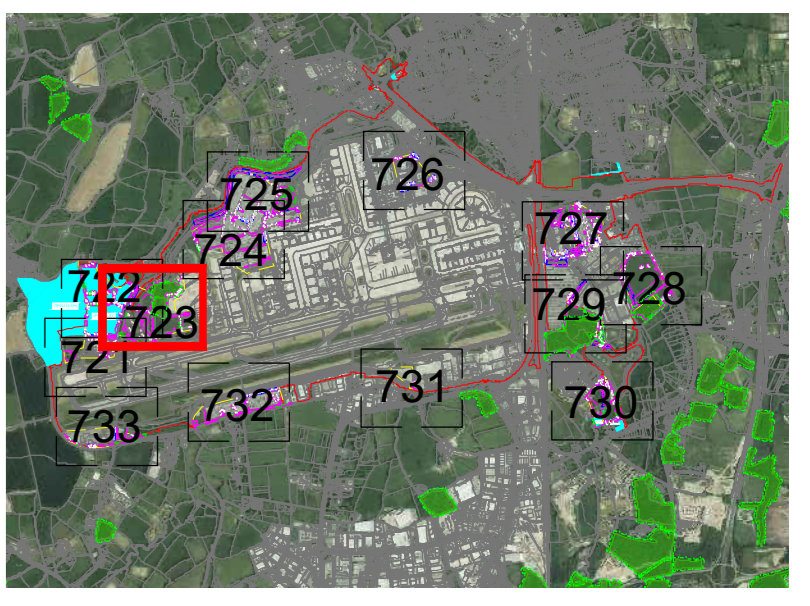
**Key**

- Site boundary.
  - Survey boundary.
  - Tree with numbered reference.  
Canopy spread and coloured BS5837:2012 tree quality category as shown below.  
• = Tree details estimate (inaccessible tree)  
• = Tree in off site location.
  - Tree group plotted with individual stem locations and numbered reference. Canopy extents coloured to match BS5837:2012 tree quality category as shown below.
  - Tree or Vegetation group with numbered reference. Canopy extents coloured to match BS5837:2012 tree quality category as shown below and dashed line to show indicative stem line.
  - Hedge with numbered reference. Canopy extents and coloured BS5837:2012 tree quality category as shown below and dashed line to show hedge centerline.
  - Woodland with numbered reference. Canopy extents coloured to match BS5837:2012 tree quality category as shown below and dashed line to show indicative tree line.
- BS 5837:2012 Tree Quality Categories - Table 1**
- Category A - High quality
  - Category B - Moderate quality
  - Category C - Low quality
  - Category U - Unsuitable for retention
- Direction of first significant branch
  - Root protection area (RPA) Calculated in accordance with Section 4.6 - BS5837:2012
  - Veteran tree buffer (15 x stem Ø) (as per standing advice produced by Forestry England and Natural England)
  - Tree protected by Tree Preservation Order. Bracketted number relates to the TPO reference.
  - Designated Ancient Woodland (as per Natural England ancient woodland inventory, via open data publication)
  - Ancient Woodland tree buffer (15m offset) (as per standing advice produced by Forestry England and Natural England)

**NOTES:**

- Refer to ES Appendix 8.10.1, Tree Survey Report and Arboricultural Impact Assessment for further details.
- Survey based on a visual inspection from the ground and is not intended as a full arboricultural inspection.
- Plan produced in accordance with recommendations set out in BS 5837:2012, 'Trees in Relation to design, demolition and construction'.
- Survey based upon Aerial Photography and trees located by eye.

**Key Plan**



**DOCUMENT**

Environmental Statement

**DRAWING TITLE**

Airport Tree Survey Plans  
Appendix 8.10.1  
Sheet 3 of 13

DATE August 2024

ORIENTATION	DRAWING NO.	REVISION
N ↑	723	For ES Issue
	DRAWN BY RC	PM / CHECKED BY DC

SCALE @ A0  
0m 25m 50m

Reproduced from Ordnance Survey map with the permission of Ordnance Survey on behalf of the controller of Her Majesty's Stationery Office © Crown Copyright (2023). License number 010031673, 10004982, 100048492.  
© Copyright 2023 Gatwick Airport Limited. No part of this drawing is to be reproduced without prior permission of Gatwick Airport Limited.





**Key**

- Site boundary.
- Survey boundary.
- Tree with numbered reference. Canopy spread and coloured BS5837:2012 tree quality category as shown below.
  - Tree details estimate (inaccessible tree)
  - Tree in off site location
- Tree group plotted with individual stem locations and numbered reference. Canopy extents coloured to match BS5837:2012 tree quality category as shown below.
- Tree or Vegetation group with numbered reference. Canopy extents coloured to match BS5837:2012 tree quality category as shown below and dashed line to show indicative stem line.
- Hedge with numbered reference. Canopy extents coloured to match BS5837:2012 tree quality category as shown below and dashed line to show hedge centreline.
- Woodland with numbered reference. Canopy extents coloured to match BS5837:2012 tree quality category as shown below and dashed line to show indicative tree line.

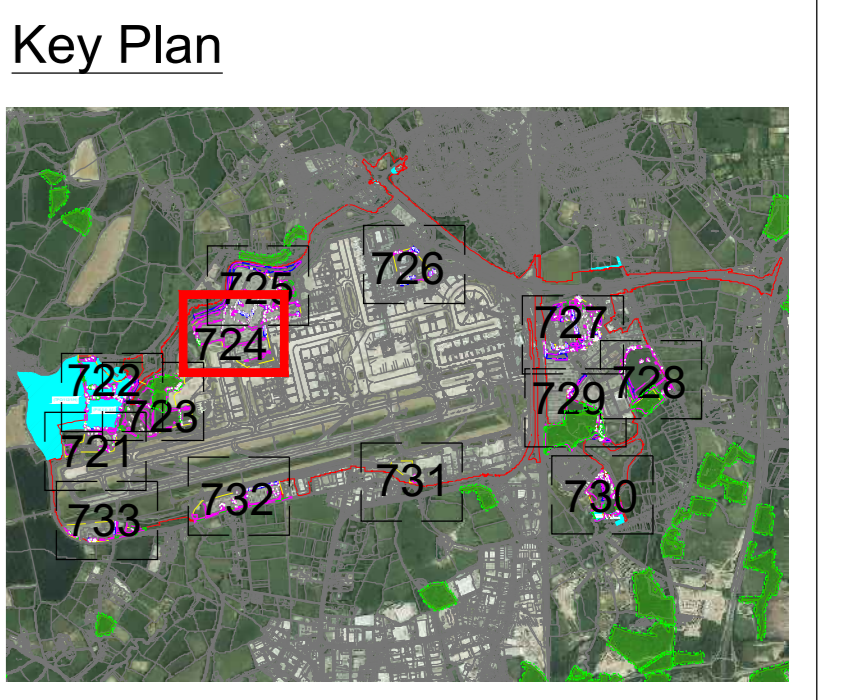
**BS 5837:2012 Tree Quality Categories - Table 1**

- Category A - High quality
- Category B - Moderate quality
- Category C - Low quality
- Category U - Unsuitable for retention

- Direction of first significant branch
- Root protection area (RPA) Calculated in accordance with Section 4.6 - BS5837:2012
- Veteran tree buffer (15 x stem Ø) (as per standing advice produced by Forestry England and Natural England)
- Tree protected by Tree Preservation Order. Bracketted number relates to the TPO reference.
- Designated Ancient Woodland (as per Natural England ancient woodland inventory, via open data publication)
- Ancient Woodland tree buffer (15m offset) (as per standing advice produced by Forestry England and Natural England)

**NOTES:**

- Refer to ES Appendix 8.10.1, Tree Survey Report and Arboricultural Impact Assessment for further details.
- Survey based on a visual inspection from the ground and is not intended as a full arboricultural inspection.
- Plan produced in accordance with recommendations set out in BS 5837:2012, 'Trees in Relation to design, demolition and construction'.
- Survey based upon Aerial Photography and trees located by eye.



DOCUMENT

**Environmental Statement**

DRAWING TITLE

**Airport Tree Survey Plans Appendix 8.10.1 Sheet 4 of 13**

DATE

**August 2024**

ORIENTATION	DRAWING NO.	REVISION
	724	For ES Issue
	DRAWN BY	PM / CHECKED BY
	RC	DC

SCALE @ A0

0m 25m 50m

Reproduced from Ordnance Survey map with the permission of Ordnance Survey on behalf of the controller of Her Majesty's Stationery Office © Crown Copyright (2023). License number 6100031673, 10004862.  
© Copyright 2023 Gatwick Airport Limited. No part of this drawing is to be reproduced without prior permission of Gatwick Airport Limited.